

## Assistance for Restoring and Managing Longleaf Pine through the Sewee Longleaf Conservation Cooperative

The **Sewee Longleaf Conservation Cooperative (SLCC)** is a group of federal, state, and private partners working in Charleston, Berkeley, Williamsburg, and Georgetown Counties to restore the longleaf pine ecosystem. This ecosystem once covered over 90 million acres across the southeast, but now is less than 4 million acres remain. The SLCC's goals is to promote the restoration of longleaf pine forests, to improve existing longleaf pine forests, and to maintain existing longleaf pine ecosystems in good condition.

### Landowner Assistance Programs

There are many programs to help landowners plant and maintain longleaf pine. Most are cost-share programs where the landowner pays for part of the work and the cost-share program pays for the rest, typically as a reimbursement. There are also resources to help with technical expertise. Both the state and federal governments have staff who can give advice and help landowners find resources. SLCC has its own cost-share program administered by **The Longleaf Alliance**. Cost-share programs include:

#### U.S. Fish and Wildlife Service (USFWS) Partners for Fish and Wildlife Program

Provides technical and financial assistance for voluntary habitat restoration on private land. Typically covers 50% of costs. Various practices that restore or improve LLP are cost-shared.

#### Natural Resources Conservation Service (NRCS) (several programs)

Provides financial and technical assistance to help plan and implement conservation practices. Pays for planting, installing firebreaks, burning, and controlling invasive plants.

#### Farm Service Agency (FSA) Conservation Reserve Program (CRP)

There is a longleaf initiative within CRP. If you have agricultural land and want to restore it to longleaf, FSA will help with the establishment and pay annual rental fees for a 10 year contract.

#### South Carolina Forestry Commission (SCFC) South Carolina Forest Stewardship Program

Stewardship Management Plans (SMP). Assistance with establishment.

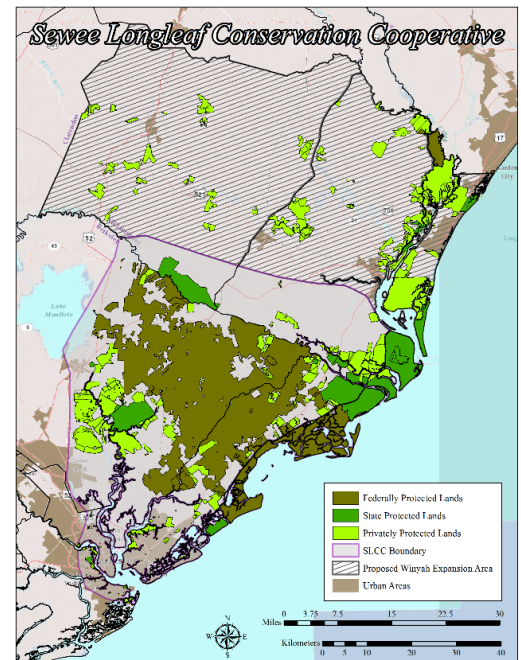
### SLCC Landowner Cost-share Program

The Longleaf Alliance (LLA) is providing assistance to forest landowners in the Sewee Longleaf Conservation Cooperative area (see map) interested in forest conservation, restoration, and management of their land including:

- Cost-share for planting, burning, and timber stand improvement
- Technical assistance to improve forest management including managing, enhancing, or restoring longleaf pine forests

**For more information or to apply for cost-share contact:**

**Jennie Haskell, The Longleaf Alliance**  
(864) 710-8089, [jennie@longleafalliance.org](mailto:jennie@longleafalliance.org)



You can learn more about upcoming meetings, field days, and funding opportunities by visiting our website at [www.seweelongleafcoop.com](http://www.seweelongleafcoop.com).



**Sewee Longleaf Conservation Cooperative**